

VI. NEW HOMOPTERA RECEIVED FROM THE NEW MEXICO AGRICULTURAL EXPERIMENT STATION.—I.

BY CARL F. BAKER, FORT COLLINS, COLO.

In several very interesting lots of Homopterous insects received from Prof. T. D. A. Cockerell, of the New Mexico Agricultural College, were included a number of new species in the families Fulgoridae, Bythoscopidae and Jassidae. In a series of papers of which this is the first, these species will be characterized, and attention called to their affinities and the localities in which they were taken.

Thamnotettix lucida, n. sp.—Pale, clear, slightly yellowish, green, entirely without markings or dark colorations. Elytra hyaline. Length male 5.5 mm.

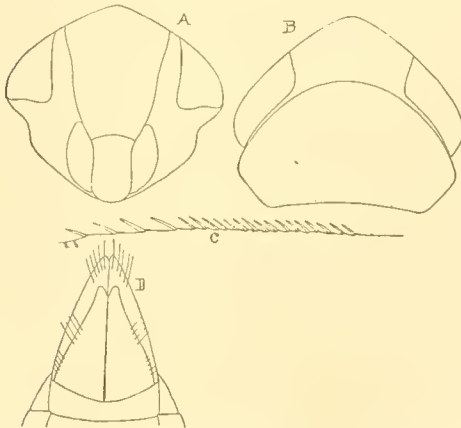


Fig. 1. *Thamnotettix lucida* n. sp. A, face; B, dorsum of head and pronotum; C, spines on inside of hind tibia; D, apex of male abdomen beneath.

Male.—Face a tenth wider than long; length of clypeus once and two-thirds the width at base, slightly constricted just before base, the basal suture strongly curved; lorae as long as clypeus and two-thirds as broad; genae with margin deeply emarginate below eyes, from this to tip of clypeus nearly rectilinear, very narrow below the lorae; front little

more than one-fourth longer than broad, little less than twice the length of the clypeus, sides slightly incurved at antennae, gradually narrowing below. Disc of vertex evenly, slightly convex, with a small depressed area on either side near the base and meeting the face at a very obtuse angle; length at middle once and a half that at the eyes, width between eyes once and five-sevenths the length. Width of pronotum about once and four fifths the length, the length nearly twice that of the vertex, curvature about five-ninths of the length. Scutellum and venation of elytra normal. Spines on inside of upper two-thirds of hind tibiae regularly arranged and very unusually numerous. While in most others there are but eight or ten spines in this region, in this species there are about 16.

Color light green, slightly tinged with yellowish which is more noticeable on the abdomen. Last abdominal segment with plate, valves, and pygofers light bluish green, the pygofers furnished at tips with numerous strong blunt bristles which are white and conspicuously brown-tipped. Legs pale, some of the spines brown-tipped. Elytra hyaline, apical areoles somewhat translucent.

Described from a single male taken at San Augustine (Ckll. 2142). This insect somewhat resembles *T. atridorsum* in form but is a very much smaller and more delicate species. It is nearly allied to *T. inornata* and *T. aureola*, but differs most noticeably from those species in being entirely without dark markings. *T. flavicapitata* is a smaller yellowish and rufous species, with a shorter vertex and smoky elytra. In the arrangement of spines on the hind tibiae, *T. lucida* differs widely from any *Thamnotettix* I have seen.

PSYCHE,

A JOURNAL OF ENTOMOLOGY.

[Established in 1874.]

Vol. 7. No. 236.

DECEMBER, 1895.

CONTENTS:

THE EPHEMERIDAE AND VENATION NOMENCLATURE (Illustrated).— <i>Vernon L. Kellogg.</i>	311
ON THE NEST AND PARASITES OF <i>PROSOPIS VARIFRONS</i> CRESSON.— <i>A. Davidson.</i>	315
THE NUMBER OF STAGES IN <i>APATELODES TORREFACTA</i> (Illustrated).— <i>Harrison G. Dyar.</i>	316
DEIDAMIA INSCRIPTA.— <i>Caroline G. Soule.</i>	317
SCHISTOCERCA AMERICANA IN NEW ENGLAND.— <i>Frank H. Sprague.</i>	318
THE INSECT COLLECTION OF THE U. S. NATIONAL MUSEUM.	318
PROCEEDINGS OF THE CAMBRIDGE ENTOMOLOGICAL CLUB (Butterflies and Orthoptera of Labrador; a hybrid Basilarchia; development of color in wings; butterfly captures in New England).	319
<hr/>	
SUPPLEMENT TO PSYCHE, I.—CONTRIBUTIONS FROM THE NEW MEXICO AGRICULTURAL EXPERIMENT STATION (New Homoptera received from the N. Mex. Agric. Exp. Station.—I (Illustrated) <i>Carl F. Baker</i> ; The grape-vine Typhlocy-bids of the Mesilla Valley, N. M. (Illustrated).— <i>T. D. A. Ckll.</i> ; <i>C. P. Gillette</i> ; Some new insects, <i>T. D. A. Cockerell.</i>)	13

PUBLISHED BY THE

CAMBRIDGE ENTOMOLOGICAL CLUB,

CAMBRIDGE, MASS., U. S. A.

YEARLY SUBSCRIPTIONS, \$2. VOLUME, \$5. MONTHLY NUMBERS, 20c.

[Entered as second class mail matter.]

Psyche, A Journal of Entomology.

RATES OF SUBSCRIPTION, ETC.

PAYABLE IN ADVANCE.

Subscriptions not discontinued are considered renewed.

Beginning with January, 1891, the rate of subscription is as follows:—

Yearly subscription, one copy, postpaid,	\$2.00
Yearly subscription, clubs of three, postpaid,	5 00
Subscription to Vol. 6 (1891-1893), postpaid,	5.00
Subscription to Vol. 6, clubs of 3, postpaid,	13.00

The index will only be sent to subscribers to the whole volume.

Twenty-five extra copies, without change of form, to the author of any leading article, if ordered at the time of sending copy, Free

Author's extras over twenty-five in number, under same conditions, each per page, 1c.

Separates, with changes of form—actual cost of such changes in addition to above rates.

Remittances, communications, exchanges, books, and pamphlets should be addressed to

EDITORS OF PSYCHE,

Cambridge, Mass., U.S.A.

ADVERTISING RATES, ETC.

TERMS CASH—STRICTLY IN ADVANCE.

Only thoroughly respectable advertisements will be allowed in PSYCHE. The editors reserve the right to reject advertisements.

Subscribers to PSYCHE can advertise insects for exchange or desired for study, not for cash, free at the discretion of the editors.

Regular style of advertisements plain, at the following rates:—

	Outside Page.	Inside Page.
Per line, first insertion,	\$0.10	\$0.08
Eighth page, first insertion,75	.60
Quarter " " " "	1.25	1.00
Half " " " "	2.25	1.75
One " " " "	4.00	3.50

Each subsequent insertion one-half the above rates.

Address EDITORS OF PSYCHE,
Cambridge, Mass., U. S. A.

Subscriptions also received in Europe by
R. FRIEDLÄNDER & SOHN,
Carlstrasse 11, Berlin, N. W.

CAMBRIDGE ENTOMOLOGICAL CLUB.

The regular meetings of the Club are now held at 7.45 P.M. on the second Friday of each month, at No. 156 Brattle St. Entomologists temporarily in Boston or Cambridge or passing through either city on that day are invited to be present.

A very few complete sets of the first six volumes of PSYCHE remain to be sold for \$29.

SAMUEL HENSHAW, Treas.,
Cambridge, Mass.

The following books and pamphlets are for sale by the CAMBRIDGE ENTOMOLOGICAL CLUB:

Burgess, E. Contributions to the anatomy of the milk-weed butterfly, <i>Danais archippus</i> . Boston, 1880. 16 p., 2 plates.	1.00
Hitchcock, Edward. Ichthyology of New England. Boston, 1858	1.50
Scudder, S. H. The earliest winged insects of America. Cambridge, 1885, 8 p., 1 plate .50	
Scudder, S. H. Historical sketch of the generic names proposed for Butterflies. Salem, 1875.	1.00
Scudder, S. H. The pine-moth of Nantucket, <i>Retinia frustrana</i> , col. pl. Boston, 1833. .25	
Scudder, S. H. The fossil butterflies of Florissant, Col., Washington, 1889	1.00
Scudder, S. H. Tertiary Tipulidae, with special reference to those of Florissant. 9 plates. Philadelphia, 1894.	2.00
Stettiner entomologische Zeitung. Jahrg. 43-44. Stettin, 1882-1883.	2.00
U. S. Entomological Commission.—Fourth Report, Washington, 1885	2.00

SAMUEL HENSHAW, Treas.,
Cambridge, Mass.

EXCHANGE.

I wish to obtain any literature on insects, especially Coleoptera, not already in my possession. In exchange for such works in any language I offer good material from the west and the far north, mostly Coleoptera.

H. F. WICKHAM,
Iowa City, Iowa.

FINE EXOTIC LEPIDOPTERA.

In great variety. List on application. Sample box of 18 Indian and African butterflies, post free, \$1.50.

DR. REID, JUN.,
Ryhope, near Sunderland, England.

DULAU & CO., FOREIGN BOOKSELLERS,
37 Soho Square, London (W.), England, will forward gratis and post free to any address their new Entomological Catalogues, Parts 23-30.